

Examples of Projects involving Educational Buildings

Examples of Projects involving

Projects 2011 to Current *bpArchitecture*

St Dominic's Priory School Stone 2019 to 2023

We were appointed to design a Replacement Changing Block and Refurbishment Works to the Priory Hall. Works were modified and re-sequenced in 2020 to respond to the Covid Pandemic. Works commenced on site in June 2021 and were completed in 2023 as a phased development.

Crompton House School Oldham BC Dec 2018 – 2020 - Secondary

Stage 3D to Stage 6 new Teaching Block utilizing Modular construction, New Dining and Kitchen Extension, Refurbishment of Selwyn Block to provide Science classes, Refurbishment of Milne Block to provide Arts, Modern Languages, and Humanities classes.

We were part of a D&B team: Contractor: Extraspace, SE Edge Design, M&E Consultant SI Sealy

The Oldham Academy North Oldham BC Sept 2018 – Sept 2019 – Secondary

Stage 3D to Stage 5 comprising new Teaching and Changing Blocks utilizing Modular construction incorporating

New Dining Extension & external works

We were part of a D&B team: Contractor: Extraspace, M&E Consultant TACE

Newstead Academy: Stoke on Trent CC £2.45 m May 2016 to June 2018

Refurbishment of the existing 1FE building and an extension to convert a 1FE into 2FE Primary School including 8 new classrooms, new staff room, offices and associated facilities, full service kitchen refit and extended hall. The works also involved new external playgrounds, MUGA and improvement works to Sports Provision and playing fields.

SBS Framework: Project Manager RLB, SE Aspin Consulting, M&E Ramboll

Oasis Academy Silvertown– Secondary £10.2m 2016

D&B Stage 1 Tender Design of a new 4FE Secondary School in London Docklands utilising a modified EFA format over 4 floors. Drawings taken to Stage 2 strategic plans and massing models to allow Contractor to price.

Tender bid with Extraspace

Student Accommodation Block (Weberley) for D&B Bid 2015

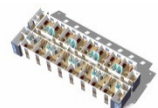
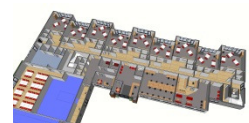
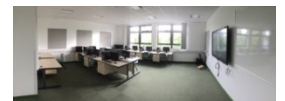
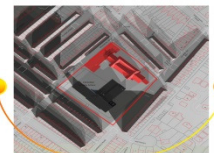
Feasibility Study for 64 Student Studio Apartments to regenerate a building of historic interest. Stage 2 plans produced.

Clarksfield School for Oldham BC £6.8m 2015

Feasibility Study for a new 3FE Primary School this is currently going through the funding process and due for implementation in 2016.

Northmoor Academy for Oldham BC (Grange) £7.2m 2015-2016

D&B Negotiated bid - A new 630 Place 3FE Primary school and 26 Place Nursery utilising a modified EFA template, constructed on a 12m sloping site. KS1 classrooms and Nursery have been located at ground floor opening out onto their own play spaces, and KS2 arranged over the first and second floor with their



Examples of Projects involving Educational Buildings

Examples of Projects involving

own separate playground area. The proposals also include provision of a Sports Hall, Dining Hall, Full Kitchen, and Ancillary spaces, plus 2 MUGA's, 3G Sports surface, Grass sports surface, and an external amphitheatre, as well as external social spaces and landscaping.

This project is on site and due for completion July 2016.

We were part of a D&B team: Contractor: Extraspace, SE Edge Design, M&E Consultant SI Sealy

Hollinwood Academy for Oldham BC £6.2m SEN 2014-2015

D&B Won at Stage 2 Tender. – We were required to design a new KS1 to KS5 ASD School to be co-located with Newbridge Special School. A compliant bid and Alternative design bid was submitted for the School and we won the project with the Alternative bid which was completed on site in Sept 2015.

A full spectrum of Classrooms and Specialist Classrooms were provided together with a Training Centre, 3 Retail units, Kinaesthetic Ball Hall and Full Size Disabled Sports Hall, and ancillary rooms, externally a MUGA, Secure outdoor teaching and play spaces and parking for 280 cars and a drop off area serving taxis and 48 mini buses was also provided.

We were part of a D&B team: Contractor: ExtraSpace, M&E Consultant SI Sealy

FSC Millport Marine Biological Study Centre Cumbrae : £2.9m 2014

D&B Stage 1 Tender – Design of a new 32 bed Student Accommodation block and a new Teaching block incorporating Lecture Theatre Marine Biology Classroom, Tutorial rooms and Ancillary spaces. Full Stage 2 design produced to enable a fully costed bid to be tendered.

Churchill Free Special School: £2m 2012

D&B Stage 1 Tender - Design of a new KS2 to KS5 Special School

Projects 2003 to Jul 2011 BSP whilst working for Hulme Upright

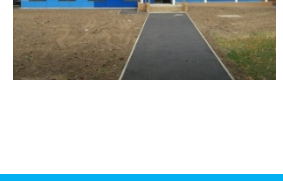
Animal Management: Reaseheath College: £1.4m Completed Oct 2010 Planning Approval March 2009 (Ph2) and 2010 (Ph3) BREEAM Exlt

A new Animal Management Centre was constructed to respond to the college's rapidly increasing numbers, it now has a zoo licence, and works in conservation of species. Bordering on a Conservation Area the building was designed to respond and sit well within the natural parkland campus setting. The new building provides Tropical Animal, Amphibians, Fish, Invertebrates, and Small Animal Rooms together with Staff Offices, 4 Lecture rooms, student hub and a new focal entrance, and external teaching space set around a courtyard.

It also included design of feature animal housings, viewing windows as part of the zoo experience, but still allowing students to be taught undisturbed within animal rooms, and the design of our first ever small shark breeding tank.

Brookfield's Special School Tilehurst Reading: £1.2m SEN completed Sept 2010

This Key Stage 5 660 m2 Special school was designed and constructed to a tight programme. The Client had failed to secure Government funding and was financing the project via their own funds. Costs as well as programme were therefore important. The project was procured via offsite construction methods, designed in January and completed in September, with external areas completed October to allow students to move over from an unsuitable thoroughly bashed about existing building.



Examples of Projects involving Educational Buildings

Examples of Projects involving

Client: Berkshire Schools

We were part of a D&B team: Contractor: ExtraSpace, M&E Consultant SI Sealy

Entry Pre Entry Reaseheath College SEN 2010 to 2011

This unit was designed as part of the Ph4 redevelopment to accommodate post main stream education needs for Special needs pupils. Situated adjacent to and attached to the Horticultural department this facility was designed to provide further education in daily life skills, IT, reading and writing as well as vocational training in horticulture to young adults with Special Needs.

Bishopsford, Rutlish, Ricards and Raynes Park 6th Form Centres London Borough of Merton Jan 2010 to Sept 2010 BREEAM Very Good

These two storey £2m each, sixth forms had a high external specification, on tight sites. The 6th Form Centre's were part of the schools vision for the future, to attract more pupils to stay in further education. The buildings were manufactured off site, craned into place and clad and finished on site.

Client: Merton Education Authority

We were part of a D&B team: Contractor: ExtraSpace, M&E Consultant SI Sealy

Reaseheath College Ph 3: 03 Horticulture – 2008 to 2009 BREEAM Exlt

This £4m design for reconstruction of the entire Horticulture department over two phases involved: - Entry pre Entry, a Service Block, Tractor and Tool Store, External Landscape teaching Shed, Cambridge Glasshouses, and Teaching blocks, together with the design of a three zone feature Glasshouse incorporating an ETFE roof (ethyltetrafluoroethylene). The scheme achieved Planning and Conservation area Approval and was taken to F1 and was shovel ready when the LSC rescinded funding in March 2009 and the project was put on indefinite hold.

Student Hub: Reaseheath College £6m 2008 to 2009 BREEAM Exlt

Part of ph 3 campus redevelopment. Planning approval was granted in 2008 and design developed to Stage F1 shovel ready before LSC funding issues in 2009 shelved this project in its ph3 form.

The scheme involving new kitchens, dining accommodation, bar, social space, and ancillary accommodation. Some of this involved refurbishment and alteration of existing buildings and wrapping a new building around this. The new accommodation abutted Reaseheath Hall, not listed but in a Conservation Area and of significant interest. Facilities were to be used by students in term time, visiting students and as holiday accommodation in the summer break, as a conference facility and for Weddings throughout the yr.

SAC Reaseheath College

This facility was designed to accommodate the educational provision of Sports and Countryside courses at the college, put on hold pending funding

Colleg Llandrillo 6th Form Centre: £200k Completed Jan 2010

This two storey building was to be used for extra classroom and Exam space for the college.

We were part of a D&B team: Contractor: ExtraSpace, M&E Consultant SI Sealy

Arboriculture, Construction and Engineering: Reaseheath College. £815k

Planning and Conservation Area Consent March 2009 BREEAM Exlt

The college as part of the phase 3 development of the campus were desperately in need of new accommodation to increase the offering and improve the facilities



Examples of Projects involving Educational Buildings

Examples of Projects involving

of the Construction, Arboriculture and large format engineering courses. An extension to the construction department and three new sheds were designed around a courtyard development. Conservation area consent was required as the buildings were to be constructed within the curtilage of the Listed Reaseheath Old Hall

Reaseheath College New Food Processing Block £1.35m 2008 BREEAM Exlt

The proposed new teaching block was part of the colleges ph 3 redevelopment programme, and included Teaching Rooms, Changing, Bakery, Meat Processing, Yoghurt processing. The design was taken to F1 before the LSC rescinded funding. The college went on to secure funding by other industry means and the facility was redesigned as part of Ph5 to incorporate additional Individual Incubator Food Start Up facilities, and the College market this as a Food Centre of Excellence. The project is now complete on site.

Reaseheath College HAMSTER : £670k BREEAM Exlt

This project was part of the colleges Ph 3 redevelopment and involved a new Horticulture and Animal Management Simulated Training and Educational Resource unit. The facility contained a teaching blocks to simulate a Pet shop, Garden Centre, and Cafeteria, Students sell products grown or manufactured at the College. Again design taken to F1 site commencement. The College are currently sourcing funding to proceed with this project by other means.

Reaseheath College Learning Resource Centre Completed Oct 2008

This £1.4m project was constructed in phase 2 and relocated the Main College reception within a feature Entrance/Atrium, and incorporates a new Library, Student Services, Welfare Services, and Learning Skills Department. The front piece of the College. Landscape bays were incorporated to surround the development which the College students plant out each season.

Reaseheath College Engineering Department Re-Cladding. £800k

This project was completed in Oct 2008. The college had reconfigured its campus layout and was keen to present an attractive image to attract students and prevent them choosing to go to other Agricultural Colleges.

The Engineering department was one of the first buildings seen as visitors arrived on the campus and a new image and facelift was required.

Reaseheath College: New Engineering Academy £1m Completed June 2008.

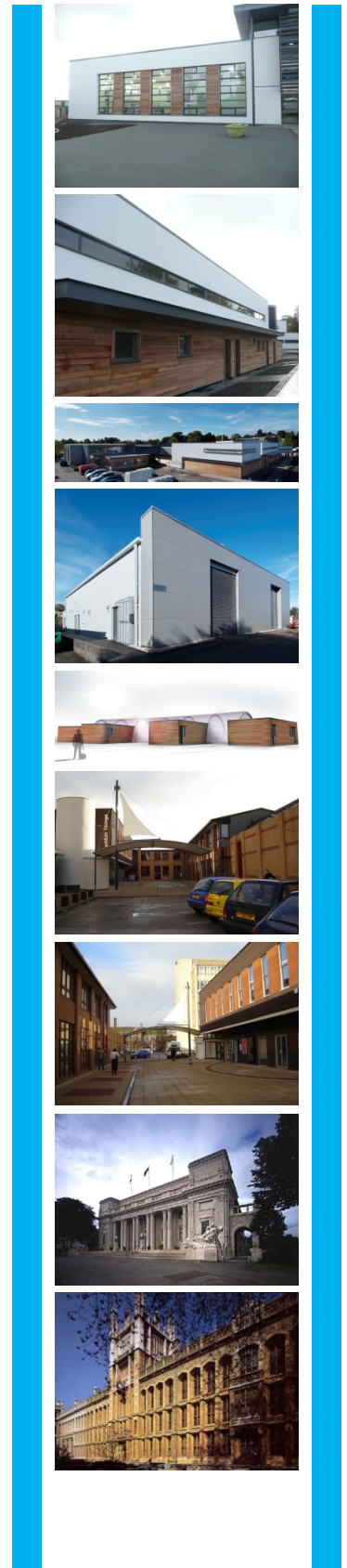
This ph 2 project involved the construction of a new building dFES funded as part of a new initiative to provide vocational training for 14-16 year olds to get them interested and go on to take up Engineering courses and work in the Engineering Industry. The unit contained one classroom, Engineering Workshops and two Engineering Incubator Units set up to mimic a typical Vehicle Repair Workshop. D&B Contract with Felton Construction

Reaseheath College New Engineering Stores Block. £300 k

The construction of a £300k new stores block attached to the Engineering department constructed at the same time as the adjacent Academy.

Students in the department are required to obtain their own parts via the stores for projects being carried out on the campus. The facility also houses the Colleges hospitality Stores area servicing the college. Completed Jun 2008.

Reaseheath College New Estates Maintenance Block. Completed 2008



Examples of Projects involving Educational Buildings

Examples of Projects involving

This £120k block was designed to house the college's maintenance department, Plumbing, Joinery, and Electrical Stores and Workshops, A feature fence was incorporated to the yard area to conceal activities and materials in the grounds of the building from Students and Visitors passing by.

Reaseheath College New Sports Turf Workshop. Completed April 2008.

This £200k shed was constructed adjacent to the Engineering Department and Colleges 9 hole Golf course, to house, teach and maintain the colleges supply of grounds maintenance equipment and vehicles.

Moorcroft Wood Primary School Bilston £1.2m

Major refurbishment of an existing school to open it as new 2 form entry School. The work involved three new extensions and a complete strip out back to structure, full M&E works, and extensive Internal Finishes works. All carried out as a phased operation whilst half the existing pupils were still in residence.

Client: Walsall MBC: Contractor: Interclass completed: Oct 2006

Media Centre: Staffs Uni College Road Campus £750k

Internal upgrading and refurbishment works to four areas to form an updated Media Centre and University Information Centre.

External Works to re-clad two facades around a central square, with external works including erection of a large tensile canopy to form a Street Café; a focal point and meeting place for students. Completed Jul 2004 - Dec 2004



Examples of Projects involving Educational Buildings

Examples of Projects involving

Projects 1997 to 2003 *whilst working for Gaunt Francis Associates and AustinSmith Lord*

Glamorgan County Hall: Grade I £1.2m

The former Glamorgan County Hall on the Welsh governments Cathay's park site was no longer used with the exception of the listed Council chamber and needed to find a new use. Cardiff University took over the building as their School of Planning, it was refurbished to provide Lecturers offices, tutorial, seminar rooms and lecture theatres.

The works also featured forming a new linking doorway from the original horseshoe corridor to the Council Chambers and negotiations with CADDW to avoid a bottleneck when students moved from one building to the next. The building was Grade II when the project commenced and upgraded to Grade I on completion of our work

Glamorgan County Hall Annexe: Grade 2 £1.1m

This annexe to the former County Hall was taken over by the University to be refurbished as a school of Social Sciences. It housed Lecturer's offices, tutorial and seminar rooms; as well as a new social area and cafeteria for students.

The Rolls Estate Library Chancery Lane

This Grade I former Public records Office was refurbished to become Kings College's Library. The unheated and un-serviced cellular book stores were opened up to form a light airy Library space with modern reading rooms and carels, together with IT infrastructure and digital data resources commensurate with a modern library.